



Executive Director's Report

August 24, 2022

Over the course of the Summer, the CID and its staff have worked diligently to develop a comprehensive list of property owners and businesses located in the corridor. Evermore CID staff are completing a comprehensive business directory, which will launch September 6th, 2022. This project, as identified in the Strategic Plan, has several main goals: to improve security and communications throughout the CID and create a sense of place within the district. The directory will be used to identify essential points of contact for the businesses, which will improve communication between business owners and the CID, while also reducing the time associated with contacting a business owner during emergencies.

The CID intends to utilize this list to help establish a greater sense of services available by publicly identifying what types of businesses are located within the district. The list will also serve the CID in various capacities: including increasing engagement of the business community in CID initiatives, increasing awareness of projects and improvements that may temporarily impact normal business operations, and will help gain a greater understanding of what types of industries the CID currently serves.

Roughly 475 manhours have been used to construct the directory. The total anticipated cost for this project is \$10,071, which includes all working hours, miles driven, and the virtual directory construction, which has been done by Gravity Junction, the CID's website host.

There have been more than 750 business visits, confirming contact information, and constructing two separate business directory lists: A master list and a public business directory. The master list details the business' point of contact and includes the property owner's information; this list will be available in the CID office, and copies will be distributed to both Gwinnett County and Snellville Police Departments. The second list, which is a more simplified version of the master list, includes the business name, address, and phone number. This list will be converted into a virtual directory which will be available to the public through our website. The virtual directory will give patrons the option to search businesses by category, business name, and location.

The US-78/GA-10 paving continues. As this project continues, the CID is working closely with GDOT to make additional improvements. One of the challenges remains the manholes that are not on grade with the new pavement. We are currently in discussions with GDOT, GwDOT and DWR to determine what can be done to impact this issue. We will continue to monitor and report back to the Board on any determination of responsibility and whether corrective action is called for and whose responsibility it is to

correct the issue. The staff rode the corridor to aid in determining what agency or department is responsible for raising the manholes. We have received commitment from both GDOT and Gwinnett County DWR pleading their assistance in addressing these issues.

We are losing the Executive Assistant for Evermore CID. As I am sure everyone is aware by now, Alex has left the CID to take on a new responsibility with Gwinnett County Department of Economic Development. In her new position comes new responsibilities. She will act in the capacity of economics management for the department. While we join to wish her well, we know and acknowledge her great contributions to the CID during her nearly four years. Her personal growth and commitment to her professional growth has resulted in her being prepared to take on this new role.

Gwinnett Department of Transportation is currently engaged in an outreach program related to transportation and specifically transit. The CID has been asked to participate in a "think tank" group to discuss transit and related issues.

The South Precinct of the Gwinnett Police Department and their Crime Analysis unit provides the CID with monthly and quarterly reports on criminal activity. The CID continues to experience a low or falling crime rate. The success of the department starts with its leadership and permeates the organization down through the department's newest recruit. The dedication and commitment to the community is unquestioned, because of these factors.

Attached to this report (Attachment A) is a copy of the latest crime information. As you will note, this crime data focuses exclusively on the CID area that lies wholly in the unincorporated Gwinnett County and does not include any of the city of Snellville. (Approximately 16% of the CID is in the city of Snellville.) The efforts of the Snellville and Gwinnett County Police Departments, their personnel and use of technology, is certainly aiding in controlling crime within the district. In addition to Attachment A you will note an additional Attachment B from the Flock Camera database. This information is compiled by the Gwinnett Police Department.

Collector Road Phase III Evermore North Blvd. (Hewatt-Parkwood-Britt):

The Gwinnett County Department of Transportation announced the let of the HPB project. As was stated in the last Board Meeting, the project started in 2007 with Earmark funds being appropriated during Congressman John Linder's term. There is a let schedule provided below:

Question cut off is 8/11/2022

Bids are due by 2:50 PM 8/18/2022.

Opening will be at 3:00 PM on 8/18/2022.

After the bids are opened, the evaluation process will take place. This action will take approximately 30 days. The successful bidder will be notified. Once the company has an opportunity to review GwDOT's comments, a start date will be set.

So, what is the anticipated time of completion of this project? Considering a phased approach, two years to two and a half years is anticipated. Why? The CID has implemented a cooperative agreement with DWR and GwDOT to install sanitary sewer on every road project the CID undertakes. Therefore, the rough ROW will be completed in order to accommodate the installation of the sewer lines. The sewer system must be completely operational to allow the existing private sewer system to be connected to the new system.

General Comments:

The 2022 Annual Report is completed and mailed to all property and business owners in the corridor. The report features a reflection of the efforts of the CID over the past year. The staff of the CID did a great job of designing and preparing the information found in the report. We have tried to refresh our past efforts to ensure the reader has an opportunity to see what their tax dollars are providing.

While we are very pleased with the document, itself, there is one error (or at least one error). On the page entitled, "Evermore 2021 Financials, there is a caption error. The caption, "Capital Budget History" should be captioned as "Fund Balance". While this is an error in the caption, the Fund Balance figures are correct.

The Board will consider awarding the successful bidder for the installation of mulch on the four quadrants and islands at West Park Place and US.78. In Attachment C you will see the tally sheet and the results of the bids for the Board's consideration.

Brightview landscapers are reassessing their staffing needs for the corridor. Apparently with the amount of rain experienced within the corridor, weeds, edging and cutting have fallen behind. On August 9th, we had a discussion with a representative with Brightview to discuss a course of action going forward. Weed and feed application was dispersed during the past month.

In regard to the continuation of landscape service, the CID has been notified by the contractor they do not wish to exercise any options. Therefore, staff will be developing an RFP for landscape services for the 2023 fiscal year. The Board should expect the bid presentation in December or January Board Meeting.

The CID has been asked to serve on the Redevelopment Council's Executive Board. While Partnership Gwinnett is not new, however, in PG's reboot (Strategic Plan 4.0), the plan has added greater focus on economic development across all segments. The profile of the group will be laser focused on how to add value to the economic development opportunities in the county.

The CID staff has continued to implement the Strategic Plan. At each of the Board meetings, we will have a strategic plan update. The discussion will only focus on those strategies that have seen progress since the previous meeting. Please think about how you can best be a part of this ongoing effort.

The CID continues to work with Piedmont Eastside and Snellville PD in their quarterly meetings. This effort continues to improve the relationship between the two entities. We are pleased to participate in the meetings in order to keep the CID abreast of crime and other issues facing both partners.

On August 17th the Gwinnett Chamber *On Topic* meeting focused on the regional economic conditions. The presenter was Ian Wyatt, Principal Economist from the Metro Atlanta Chamber of Commerce. There was comparison of the Metro Atlanta area vs the US. But he did answer one question, why are so many people moving to Georgia. The answer: a favorable climate, workforce, housing availability, low cost of living and other factors. The unemployment is currently hovering around 3.3%, which is near full employment. Other information provided focused on hard numbers. He predicts a 1%-2% growth in 2022. This low number is because of issues such as high inflation, slowing construction and much weaker global economy.



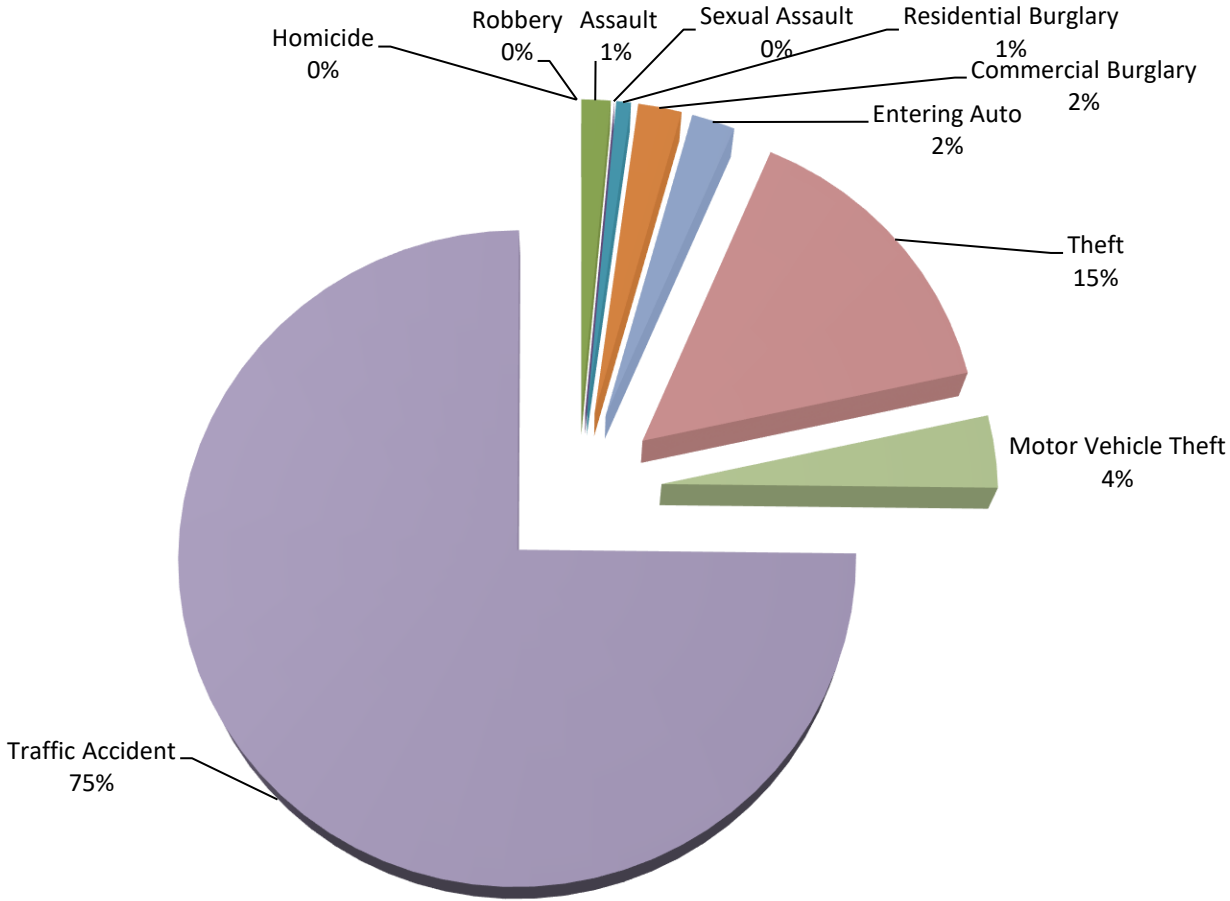
Evermore Community Improvement District Monthly Stats

**Gwinnett County Police
Department
Crime Analysis Unit**

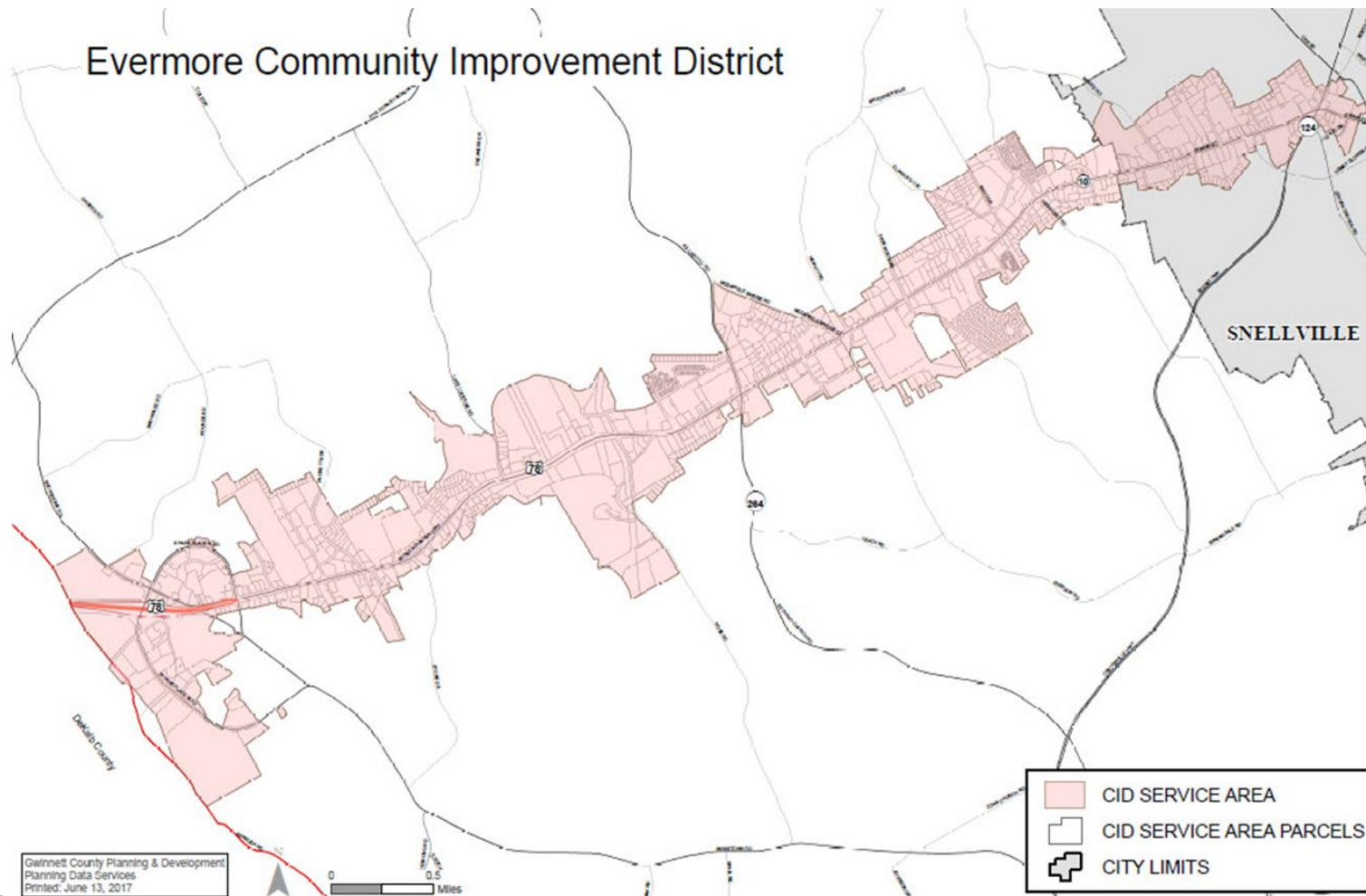
Evermore Monthly Stats

DESCRIPTION	July 2022	June 2022
HOMICIDE	0	0
ROBBERY	0	1
ASSAULT	2	3
SEXUAL ASSAULT	0	0
RESIDENTIAL BURGLARY	1	0
COMMERCIAL BURGLARY	3	5
ENTERING AUTO	3	6
THEFT	21	25
MOTOR VEHICLE THEFT	5	7
TRAFFIC ACCIDENT	104	97

Evermore Monthly Stats



Evermore Monthly Stats



Attachment B

Flock Camera 2022 Numbers: Jan-July 15th

	Stolen Vehicle Located	Wanted Person Located	Arrest	Drug Arrest	Weapons Recovered	Missing Person Located	Investigative Lead
January	1		2				4
February	1						
March	2	2	4		1	1	6
April	3	2	7				17
May	2	2	4				7
June	2	1	3			1	3
July			1				2
August							
September							
October							
November							
December							
Total	11	7	21	0	1		39